

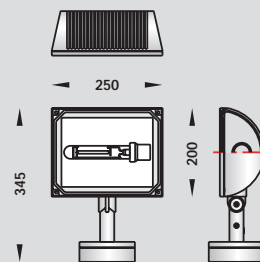
# OD-2300

COMPACT SURFACE WASHER



## NEW FOR 2006

THIS IS PROVISION DATA ONLY.  
ACTUAL DIMENSION AND LOOK  
MAY DIFFER FROM THIS.



## NEW FOR 2006

THIS IS PROVISION DATA ONLY.  
ACTUAL DIMENSION AND LOOK  
MAY DIFFER FROM THIS.

### SPECIFICATION

**CONSTRUCTION:** Fixture is manufactured in compliance with IEC 60598-1. Electrical protection class 1. IP65.

**BODY:** Housing and bracket in corrosion resistant high-pressure die-cast aluminium ADC12 alloy.

**OPTIC COVER:** Impact resistant transparent safety tempered glass. Able to stand sudden change in temperature of up to 250°C.

**REFLECTOR:** High purity anodised aluminium 99.90% Bi-symmetrical light distribution. Available in diffused and concentrated light output.

**PROTECTION:** Weather proof and durable silicone gasket. Service temperature -40°to +200°C.

**FASTENING:** All external screw is in 316 stainless steel with silicone grease dipping.

**CABLE ENTRY:** Protected by weather proof IP67 PG11 synthesized rubber grommet for H07RN-F cable 3G x1.0

**LAMP HOLDER:** Rx7s holder in steatite body with electrolytic silver contact from EMC Colosio - Italy / ENEC approved. For discharge lamp and halogen lamp. T250 rating 6/1000/5kV. E27 ceramic nickle-coated contact from Vossloh Schwabe - Germany / ENEC approved. For Par lamp. T270 rating 4/250/5kV.

**CONTROL GEAR:** Magnetic ballast from Vossloh Schwabe - Germany / ENEC approved. 230V 50Hz tw130. For discharge lamp. Electronic superimposed ignitor with automatic switch-off feature from Vossloh Schwabe - Germany / ENEC approved. Ignition voltage 4-5kV 220-240V 50-60Hz. For ceramic/quartz discharge lamp. Power factor correction for discharge lamp from Vossloh Schwabe - Germany or from Electronicon - Germany. ENEC approved.

**WIRING:** 1x0.75 silicone rubber insulated cable with fiberglass braid from CET Eletric - Italy / IMQ approved. 2kV / -60°to +180°C service temperature. Double silicone insulation ignition wire. Tinned copper condutor. Impulsive voltage 5kV. Connector in glass-fiber reinforced PA6.6 from BM - Italy / ENEC approved. Service temperature up to 200°C. Cross section 4mm² Rating 4A/400V. Wiring provided with earth connection.

**PAINTING:** First Stage: Chromatization treatment, resistant to corrosive and extreme environment. Second Stage: Coated with UV stabilized polyester powder in automatic chamber. Third Stage: Baked in digital temperature control room at 200°C for 30 minutes.

### AVAILABLE COLOR:

Black - RAL9005 (replace last 2 digits on ordering code with 01)  
Graphite - RAL7016 (replace last 2 digits on ordering code with 02)  
Dark Grey - RAL7037 (replace last 2 digits on ordering code with 03)  
Aluminium Silver - RAL9006 (replace last 2 digits on ordering code with 04)  
White - RAL9010 (replace last 2 digits on ordering code with 06)

### AVAILABLE LIGHT OUTPUT:

Concentrated light (replace the 5th digit on ordering code with 6)  
Diffuser light (replace the 5th digit on ordering code with 7)

METAL HALIDE  
Ordering Code:  
**2300-X-3-721-XX**  
HIT-CE E27  
70W (6500 lm)

METAL HALIDE  
Ordering Code:  
**2300-X-3-731-XX**  
HIT-DE-CE RX7s  
70W (6500 lm)

METAL HALIDE  
Ordering Code:  
**2300-X-3-732-XX**  
HIT-DE-CE RX7s-24  
150W (14200 lm)

HIGH PRESSURE SODIUM  
Ordering Code:  
**2300-X-3-621-XX**  
HST-MF E27  
70W (6600 lm)

HIGH PRESSURE SODIUM  
Ordering Code:  
**2300-X-3-631-XX**  
HST-DE RX7s  
70W (6800 lm)

HIGH PRESSURE SODIUM  
Ordering Code:  
**2300-X-3-632-XX**  
HST-DE RX7s-24  
150W (15000 lm)

TUNGSTEN HALOGEN  
Ordering Code:  
**2300-X-2-235-XX**  
QT-DE RX7s  
300W (5300 lm)

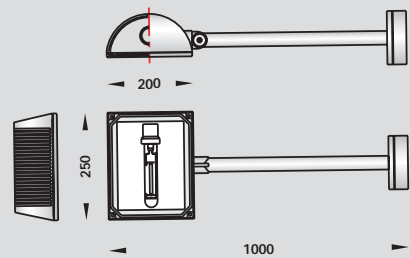
# OD-2301

COMPACT SURFACE WASHER WITH  
OUTRIGGER ARM



## NEW FOR 2006

THIS IS PROVISION DATA ONLY.  
ACTUAL DIMENSION AND LOOK  
MAY DIFFER FROM THIS.



**NEW FOR 2006**  
THIS IS PROVISION DATA ONLY.  
ACTUAL DIMENSION AND LOOK  
MAY DIFFER FROM THIS.

**SPECIFICATION**

**CONSTRUCTION:** Fixture is manufactured in compliance with IEC 60598-1. Electrical protection class 1. IP65.

**BODY:** Housing and bracket in corrosion resistant high-pressure die-cast aluminium ADC12 alloy.

**OPTIC COVER:** Impact resistant transparent safety tempered glass. Able to stand sudden change in temperature of up to 250°C.

**REFLECTOR:** High purity anodised aluminium 99.90% Bi-symmetrical light distribution. Available in diffused and concentrated light output.

**PROTECTION:** Weather proof and durable silicone gasket. Service temperature -40°to +200°C.

**FASTENING:** All external screw is in 316 stainless steel with silicone grease dipping.

**CABLE ENTRY:** Protected by weather proof IP67 PG11 synthesized rubber grommet for H07RN-F cable 3G x1.0

**LAMP HOLDER:** Rx7s holder in steatite body with electrolytic silver contact from EMC Colosio - Italy / ENEC approved. For discharge lamp and halogen lamp. T250 rating 6/1000/5kV. E27 ceramic nickle-coated contact from Vossloh Schwabe - Germany / ENEC approved. For Par lamp. T270 rating 4/250/5kV.

**CONTROL GEAR:** Magnetic ballast from Vossloh Schwabe - Germany / ENEC approved. 230V 50Hz tw130. For discharge lamp. Electronic superimposed ignitor with automatic switch-off feature from Vossloh Schwabe - Germany / ENEC approved. Ignition voltage 4-5kV 220-240V 50-60Hz. For ceramic/quartz discharge lamp. Power factor correction for discharge lamp from Vossloh Schwabe - Germany or from Electronicon - Germany. ENEC approved.

**WIRING:** 1x0.75 silicone rubber insulated cable with fiberglass braid from CET Eletric - Italy / IMQ approved. 2kV / -60°to +180°C service temperature. Double silicone insulation ignition wire. Tinned copper condutor. Impulsive voltage 5kV. Connector in glass-fiber reinforced PA6.6 from BM - Italy / ENEC approved. Service temperature up to 200°C. Cross section 4mm². Rating 4A/400V. Wiring provided with earth connection.

**PAINTING:** First Stage: Chromatization treatment, resistant to corrosive and extreme environment. Second Stage: Coated with UV stabilized polyester powder in automatic chamber. Third Stage: Baked in digital temperature control room at 200°C for 30 minutes.

**AVAILABLE COLOR:**

Black - RAL9005 (replace last 2 digits on ordering code with 01)  
Graphite - RAL7016 (replace last 2 digits on ordering code with 02)  
Dark Grey - RAL7037 (replace last 2 digits on ordering code with 03)  
Aluminium Silver - RAL9006 (replace last 2 digits on ordering code with 04)  
White - RAL9010 (replace last 2 digits on ordering code with 06)

**AVAILABLE LIGHT OUTPUT:**

Concentrated light (replace the 5th digit on ordering code with 6)  
Diffuser light (replace the 5th digit on ordering code with 7)

METAL HALIDE  
Ordering Code:  
**2301-X-3-721-XX**  
HIT-CE E27  
70W (6500 lm)

METAL HALIDE  
Ordering Code:  
**2301-X-3-731-XX**  
HIT-DE-CE RX7s  
70W (6500 lm)

METAL HALIDE  
Ordering Code:  
**2301-X-3-732-XX**  
HIT-DE-CE RX7s-24  
150W (14200 lm)

HIGH PRESSURE SODIUM  
Ordering Code:  
**2301-X-3-621-XX**  
HST-MF E27  
70W (6600 lm)

HIGH PRESSURE SODIUM  
Ordering Code:  
**2301-X-3-631-XX**  
HST-DE RX7s  
70W (6800 lm)

HIGH PRESSURE SODIUM  
Ordering Code:  
**2301-X-3-632-XX**  
HST-DE RX7s-24  
150W (15000 lm)

TUNGSTEN HALOGEN  
Ordering Code:  
**2301-X-2-235-XX**  
QT-DE RX7s  
300W (5300 lm)

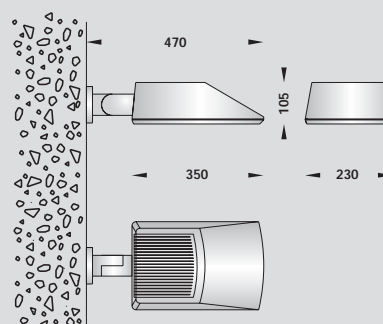
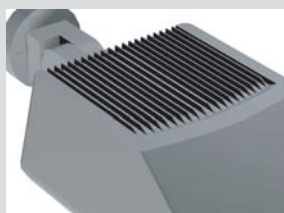
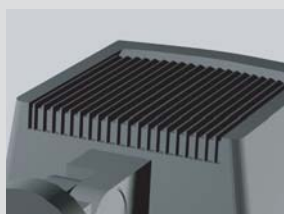
# OD-2340

ASYMMERTICAL SMALL  
SURFACE WASHER



## NEW FOR 2007

THIS IS PROVISION DATA ONLY.  
ACTUAL DIMENSION AND LOOK  
MAY DIFFER FROM THIS.



**NEW FOR 2007**  
 THIS IS PROVISION DATA ONLY.  
 ACTUAL DIMENSION AND LOOK  
 MAY DIFFER FROM THIS.

**SPECIFICATION**

**CONSTRUCTION:** Fixture is manufactured in compliance with IEC 60598-1. Electrical protection class 1. IP65.

**BODY:** Housing and bracket in corrosion resistant high-pressure die-cast aluminium ADC12 alloy.

**OPTIC COVER:** Impact resistant transparent safety tempered glass. Able to stand sudden change in temperature of up to 250°C.

**REFLECTOR:** High purity anodised aluminium 99.90% Asymmetrical light distribution. Available in diffused and concentrated light output.

**PROTECTION:** Weather proof and durable silicone gasket. Service temperature -40°to +200°C.

**FASTENING:** All external screw is in 316 stainless steel with silicone grease dipping.

**CABLE ENTRY:** Two IP67 M20 brass nickle cable gland for H07RN-F cable 3G x1 Possible for through wiring.

**LAMP HOLDER:** Rx7s holder in steatite body with electrolytic silver contact from EMC Colosio - Italy / ENEC approved. For discharge lamp and halogen lamp. T250 rating 6/1000/5kV.

**CONTROL GEAR:** Magnetic ballast from Vossloh Schwabe - Germany / ENEC approved. 230V 50Hz tw130. For discharge lamp. Electronic superimposed ignitor with automatic switch-off feature from Vossloh Schwabe - Germany / ENEC approved. Ignition voltage 4-5kV 220-240V 50-60Hz. For ceramic/quartz discharge lamp. Power factor correction for discharge lamp from Vossloh Schwabe - Germany or from Electronicon - Germany. ENEC approved.

**WIRING:** 1x0.75 silicone rubber insulated cable with fiberglass braid from CET Eletric - Italy / IMQ approved. 2kV / -60°to +180°C service temperature. Double silicone insulation ignition wire. Tinned copper condutor. Impulsive voltage 5kV. Connector in glass-fiber reinforced PA6.6 from BM - Italy / ENEC approved. Service temperature up to 200°C. Cross section 4mm². Rating 4A/400V. Wiring provided with earth connection.

**PAINTING:** First Stage: Chromatzation treatment, resistant to corrosive and extreme environment. Second Stage: Coated with UV stabilized polyester powder in automatic chamber. Third Stage: Baked in digital temperature control room at 200°C for 30 minutes.

METAL HALIDE  
 Ordering Code:  
**2340-X-3-731-XX**  
 HIT-DE-CE RX7s  
 70W (6500 lm)

METAL HALIDE  
 Ordering Code:  
**2340-X-3-732-XX**  
 HIT-DE-CE RX7s-24  
 150W (14200 lm)

HIGH PRESSURE SODIUM  
 Ordering Code:  
**2340-X-3-631-XX**  
 HST-DE RX7s  
 70W (6800 lm)

HIGH PRESSURE SODIUM  
 Ordering Code:  
**2340-X-3-632-XX**  
 HST-DE RX7s-24  
 150W (15000 lm)

TUNGSTEN HALOGEN  
 Ordering Code:  
**2340-X-2-235-XX**  
 QT-DE RX7s  
 300W (5300 lm)

**AVAILABLE COLOR:**

Black - RAL9005 (replace last 2 digits on ordering code with 01)  
 Graphite - RAL7016 (replace last 2 digits on ordering code with 02)  
 Dark Grey - RAL7037 (replace last 2 digits on ordering code with 03)  
 Aluminium Silver - RAL9006 (replace last 2 digits on ordering code with 04)  
 White - RAL9010 (replace last 2 digits on ordering code with 06)

**AVAILABLE LIGHT OUTPUT:**

Concentrated light (replace the 5th digit on ordering code with 6)  
 Diffuser light (replace the 5th digit on ordering code with 7)

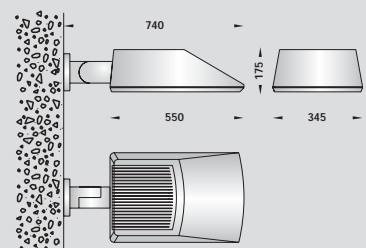
# OD-2350

MEDIUM ASYMMETRICAL  
SURFACE WASHER



## NEW FOR 2007

THIS IS PROVISION DATA ONLY.  
ACTUAL DIMENSION AND LOOK  
MAY DIFFER FROM THIS.



**NEW FOR 2007**  
 THIS IS PROVISION DATA ONLY.  
 ACTUAL DIMENSION AND LOOK  
 MAY DIFFER FROM THIS.

**SPECIFICATION**

**CONSTRUCTION:** Fixture is manufactured in compliance with IEC 60598-1. Electrical protection class 1. IP65.

**BODY:** Housing and bracket in corrosion resistant high-pressure die-cast aluminium ADC12 alloy.

**OPTIC COVER:** Impact resistant transparent safety tempered glass. Able to stand sudden change in temperature of up to 250°C.

**REFLECTOR:** High purity anodised aluminium 99.90% Asymmetrical light distribution. Available in diffused and concentrated light output.

**PROTECTION:** Weather proof and durable silicone gasket. Service temperature -40°to +200°C.

**FASTENING:** All external screw is in 316 stainless steel with silicone grease dipping.

**CABLE ENTRY:** Two IP67 M20 brass nickle cable gland for H07RN-F cable 3G x1 Possible for through wiring.

**LAMP HOLDER:** E40 ceramic nickle-coated contact from Vossloh Schwabe - Germany / ENEC approved. For discharge lamp. T270 nominal rating 18/750. Fc2 ceramic nickle conductor from Vossloh Schwabe - Germany / ENEC approved. For discharge lamp. T250 rating 10/250/5kV.

**CONTROL GEAR:** Magnetic ballast from Vossloh Schwabe - Germany / ENEC approved. 230V 50Hz tw130. For discharge lamp. Electronic superimposed ignitor with automatic switch-off feature from Vossloh Schwabe - Germany / ENEC approved. Ignition voltage 4-5kV 220-240V 50-60Hz. For ceramic/quartz discharge lamp. Power factor correction for discharge lamp from Vossloh Schwabe - Germany or from Electronicon - Germany. ENEC approved.

**WIRING:** 1x1.5 silicone rubber insulated cable with fiberglass braid from CET Eletric - Italy / IMQ approved. 2kV / -60°to +180°C service temperature. Double silicone insulation ignition wire. Tinned copper condutor. Impulsive voltage 5kV. Connector in glass-fiber reinforced PA6.6 from BM - Italy / ENEC approved. Service temperature up to 200°C. Cross section 4mm² Rating 4A/400V. Wiring provided with earth connection.

**PAINTING:** First Stage: Chromatization treatment, resistant to corrosive and extreme environment. Second Stage: Coated with UV stabilized polyester powder in automatic chamber. Third Stage: Baked in digital temperature control room at 200°C for 30 minutes.

METAL HALIDE  
 Ordering Code:  
**2350-X-3-722-XX**  
 HIT-CE E40  
 150W (14500 lm)

METAL HALIDE  
 Ordering Code:  
**2350-X-3-733-XX**  
 HIT-DE-CE Fc2  
 250W (24500 lm)

HIGH PRESSURE SODIUM  
 Ordering Code:  
**2350-X-3-623-XX**  
 HST-MF E40  
 150W (17500 lm)

HIGH PRESSURE SODIUM  
 Ordering Code;  
**2350-X-3-633-XX**  
 HST-DE Fc2  
 250W (25500 lm)

**AVAILABLE COLOR:**

Black - RAL9005 (replace last 2 digits on ordering code with 01)  
 Graphite - RAL7016 (replace last 2 digits on ordering code with 02)  
 Dark Grey - RAL7037 (replace last 2 digits on ordering code with 03)  
 Aluminium Silver - RAL9006 (replace last 2 digits on ordering code with 04)  
 White - RAL9010 (replace last 2 digits on ordering code with 06)

**AVAILABLE LIGHT OUTPUT:**

Concentrated light (replace the 5th digit on ordering code with 6)  
 Diffuser light (replace the 5th digit on ordering code with 7)

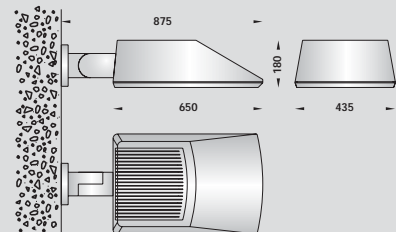
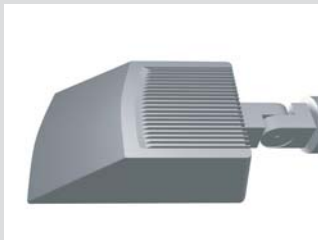
# OD-2360

LARGE ASYMMETRICAL  
SURFACE WASHER



## NEW FOR 2007

THIS IS PROVISION DATA ONLY.  
ACTUAL DIMENSION AND LOOK  
MAY DIFFER FROM THIS.



**NEW FOR 2007**  
 THIS IS PROVISION DATA ONLY.  
 ACTUAL DIMENSION AND LOOK  
 MAY DIFFER FROM THIS.

**SPECIFICATION**

<p><b>CONSTRUCTION:</b> Fixture is manufactured in compliance with IEC 60598-1. Electrical protection class 1. IP65.</p> <p><b>BODY:</b> Housing and bracket in corrosion resistant high-pressure die-cast aluminium ADC12 alloy.</p> <p><b>OPTIC COVER:</b> Impact resistant transparent safety tempered borosilicate glass. Able to stand sudden change in temperature of up to 500°C.</p> <p><b>REFLECTOR:</b> High purity anodised aluminium 99.90% Asymmetrical light distribution. Available in diffused and concentrated light output.</p> <p><b>PROTECTION:</b> Weather proof and durable silicone gasket. Service temperature -40°to +200°C.</p> <p><b>FASTENING:</b> All external screw is in 316 stainless steel with silicone grease dipping.</p> <p><b>CABLE ENTRY:</b> Two IP67 M24 brass nickle cable gland for H07RN-F cable 3G x1.5 Possible for through wiring.</p> <p><b>LAMP HOLDER:</b> E40 ceramic nickle-coated contact from Vossloh Schwabe - Germany / ENEC approved. For discharge lamp. T270 nominal rating 18/750. Fc2 ceramic nickle conductor from Vossloh Schwabe - Germany / ENEC approved. For discharge lamp. T250 rating 10/250/5kV.</p> <p><b>CONTROL GEAR:</b> Magnetic ballast from Vossloh Schwabe - Germany / ENEC approved. 230V 50Hz tw130. For discharge lamp. Electronic superimposed ignitor with automatic switch-off feature from Vossloh Schwabe - Germany / ENEC approved. Ignition voltage 4-5kV 220-240V 50-60Hz. For ceramic/quartz discharge lamp. Power factor correction for discharge lamp from Vossloh Schwabe - Germany or from Electronicon - Germany. ENEC approved.</p> <p><b>WIRING:</b> 1x1.5 silicone rubber insulated cable with fiberglass braid from CET Eletric - Italy / IMQ approved. 2kV / -60°to +180°C service temperature. Double silicone insulation ignition wire. Tinned copper condutor. Impulsive voltage 5kV. Connector in glass-fiber reinforced PA6.6 from BM - Italy / ENEC approved. Service temperature up to 200°C. Cross section 4mm<sup>2</sup> Rating 4A/400V. Wiring provided with earth connection.</p> <p><b>PAINTING:</b> First Stage: Chromatzation treatment, resistant to corrosive and extreme environment. Second Stage: Coated with UV stabilized polyester powder in automatic chamber. Third Stage: Baked in digital temperature control room at 200°C for 30 minutes.</p>	<p>METAL HALIDE          Ordering Code:  <b>2360-X-3-723-XX</b>          HIT-CE E40          250W (26000 lm)</p> <p>METAL HALIDE          Ordering Code:  <b>2360-X-3-724-XX</b>          HIT E40          400W (42000 lm)</p> <p>METAL HALIDE          Ordering Code:  <b>2360-X-3-733-XX</b>          HIT-DE-CE Fc2          250W (24500 lm)</p> <p>METAL HALIDE          Ordering Code:  <b>2360-X-3-734-XX</b>          HIT-DE Fc2          400W (37000 lm)</p> <p>HIGH PRESSURE SODIUM          Ordering Code:  <b>2360-X-3-624-XX</b>          HST-MF E40          250W (33200 lm)</p>	<p>HIGH PRESSURE SODIUM          Ordering Code:  <b>2360-X-3-633-XX</b>          HST-DE Fc2          250W (25500 lm)</p>
<p><b>AVAILABLE COLOR:</b></p> <p>Black - RAL9005 (replace last 2 digits on ordering code with 01)</p> <p>Graphite - RAL7016 (replace last 2 digits on ordering code with 02)</p> <p>Dark Grey - RAL7037 (replace last 2 digits on ordering code with 03)</p> <p>Aluminium Silver - RAL9006 (replace last 2 digits on ordering code with 04)</p> <p>White - RAL9010 (replace last 2 digits on ordering code with 06)</p>	<p>HIGH PRESSURE SODIUM          Ordering Code:  <b>2360-X-3-625-XX</b>          HST-MF E40          400W (56500 lm)</p>	<p>HIGH PRESSURE SODIUM          Ordering Code:  <b>2360-X-3-634-XX</b>          HST-DE Fc2          400W (48000 lm)</p>

**AVAILABLE LIGHT OUTPUT:**

Concentrated light (replace the 5th digit on ordering code with 6)  
 Diffuser light (replace the 5th digit on ordering code with 7)

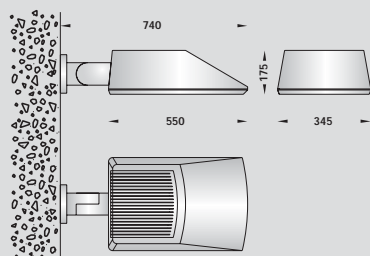
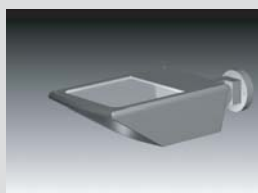
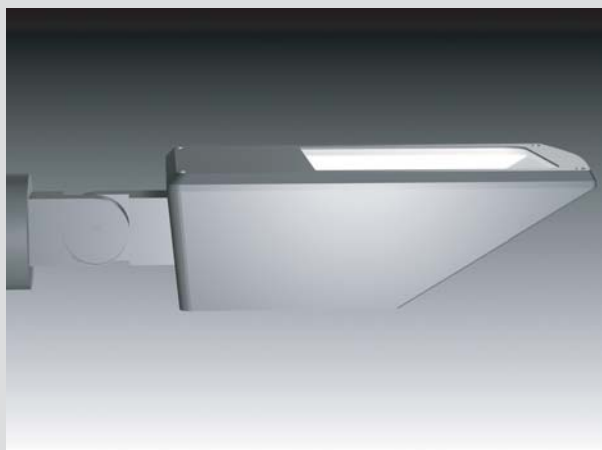
# OD-2351

MEDIUM BI-SYMMERTICAL SURFACE  
WASHER



**NEW FOR 2007**

THIS IS PROVISION DATA ONLY.  
ACTUAL DIMENSION AND LOOK  
MAY DIFFER FROM THIS.



**NEW FOR 2007**  
 THIS IS PROVISION DATA ONLY.  
 ACTUAL DIMENSION AND LOOK  
 MAY DIFFER FROM THIS.

**SPECIFICATION**

**CONSTRUCTION:** Fixture is manufactured in compliance with IEC 60598-1. Electrical protection class 1. IP65.

**BODY:** Housing and bracket in corrosion resistant high-pressure die-cast aluminium ADC12 alloy.

**OPTIC COVER:** Impact resistant transparent safety tempered glass. Able to stand sudden change in temperature of up to 250°C.

**REFLECTOR:** High purity anodised aluminium 99.90% Bi-symmetrical light distribution. Available in diffused and concentrated light output.

**PROTECTION:** Weather proof and durable silicone gasket. Service temperature -40°to +200°C.

**FASTENING:** All external screw is in 316 stainless steel with silicone grease dipping.

**CABLE ENTRY:** Two IP67 M20 brass nickle cable gland for H07RN-F cable 3G x1 Possible for through wiring.

**LAMP HOLDER:** E40 ceramic nickle-coated contact from Vossloh Schwabe - Germany / ENEC approved. For discharge lamp. T270 nominal rating 18/750. Fc2 ceramic nickle conductor from Vossloh Schwabe - Germany / ENEC approved. For discharge lamp. T250 rating 10/250/5kV.

**CONTROL GEAR:** Magnetic ballast from Vossloh Schwabe - Germany / ENEC approved. 230V 50Hz tw130. For discharge lamp. Electronic superimposed ignitor with automatic switch-off feature from Vossloh Schwabe - Germany / ENEC approved. Ignition voltage 4-5kV 220-240V 50-60Hz. For ceramic/quartz discharge lamp. Power factor correction for discharge lamp from Vossloh Schwabe - Germany or from Electronicon - Germany. ENEC approved.

**WIRING:** 1x1.5 silicone rubber insulated cable with fiberglass braid from CET Eletric - Italy / IMQ approved. 2kV / -60°to +180°C service temperature. Double silicone insulation ignition wire. Tinned copper condutor. Impulsive voltage 5kV. Connector in glass-fiber reinforced PA6.6 from BM - Italy / ENEC approved. Service temperature up to 200°C. Cross section 4mm². Rating 4A/400V. Wiring provided with earth connection.

**PAINTING:** First Stage: Chromatzation treatment, resistant to corrosive and extreme environment. Second Stage: Coated with UV stabilized polyester powder in automatic chamber. Third Stage: Baked in digital temperature control room at 200°C for 30 minutes.

**METAL HALIDE**  
 Ordering Code:  
**2351-X-3-722-XX**  
 HIT-CE E40  
 150W (14500 lm)

**HIGH PRESSURE SODIUM**  
 Ordering Code:  
**2351-X-3-623-XX**  
 HST-MF E40  
 150W (17500 lm)

**AVAILABLE COLOR:**

Black - RAL9005 (replace last 2 digits on ordering code with 01)  
 Graphite - RAL7016 (replace last 2 digits on ordering code with 02)  
 Dark Grey - RAL7037 (replace last 2 digits on ordering code with 03)  
 Aluminium Silver - RAL9006 (replace last 2 digits on ordering code with 04)  
 White - RAL9010 (replace last 2 digits on ordering code with 06)

**AVAILABLE LIGHT OUTPUT:**

Concentrated light (replace the 5th digit on ordering code with 6)  
 Diffuser light (replace the 5th digit on ordering code with 7)

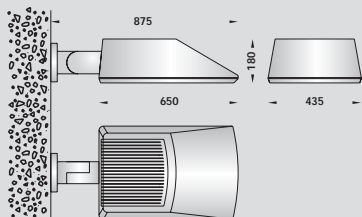
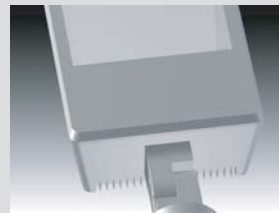
# OD-2361

LARGE BI-SYMMETRICAL  
SURFACE WASHER



**NEW FOR 2007**

THIS IS PROVISION DATA ONLY.  
ACTUAL DIMENSION AND LOOK  
MAY DIFFER FROM THIS.



**NEW FOR 2007**  
 THIS IS PROVISION DATA ONLY.  
 ACTUAL DIMENSION AND LOOK  
 MAY DIFFER FROM THIS.

**SPECIFICATION**

CONSTRUCTION:	Fixture is manufactured in compliance with IEC 60598-1. Electrical protection class 1. IP65.	
BODY:	Housing and bracket in corrosion resistant high-pressure die-cast aluminium ADC12 alloy.	
OPTIC COVER:	Impact resistant transparent safety tempered borosilicate glass. Able to stand sudden change in temperature of up to 500°C.	METAL HALIDE Ordering Code: <b>2361-X-3-723-XX</b> HIT-CE E40 250W (26000 lm)
REFLECTOR:	High purity anodised aluminium 99.90% Bi-symmetrical light distribution. Available in diffused and concentrated light output.	
PROTECTION:	Weather proof and durable silicone gasket. Service temperature -40°to +200°C.	
FASTENING:	All external screw is in 316 stainless steel with silicone grease dipping.	
CABLE ENTRY:	Two IP67 M24 brass nickle cable gland for H07RN-F cable 3G x1.5 Possible for through wiring.	METAL HALIDE Ordering Code: <b>2361-X-3-724-XX</b> HIT E40 400W (42000 lm)
LAMP HOLDER:	E40 ceramic nickle-coated contact from Vossloh Schwabe - Germany / ENEC approved. For discharge lamp. T270 nominal rating 18/750. Fc2 ceramic nickle conductor from Vossloh Schwabe - Germany / ENEC approved. For discharge lamp. T250 rating 10/250/5kV.	
CONTROL GEAR:	Magnetic ballast from Vossloh Schwabe - Germany / ENEC approved. 230V 50Hz tw130. For discharge lamp. Electronic superimposed ignitor with automatic switch-off feature from Vossloh Schwabe - Germany / ENEC approved. Ignition voltage 4-5kV 220-240V 50-60Hz. For ceramic/quartz discharge lamp. Power factor correction for discharge lamp from Vossloh Schwabe - Germany or from Electronicon - Germany. ENEC approved.	HIGH PRESSURE SODIUM Ordering Code: <b>2361-X-3-624-XX</b> HST-MF E40 250W (33200 lm)
WIRING:	1x1.5 silicone rubber insulated cable with fiberglass braid from CET Electric - Italy / IMQ approved. 2kV / -60°to +180°C service temperature. Double silicone insulation ignition wire. Tinned copper conductor. Impulsive voltage 5kV. Connector in glass-fiber reinforced PA6.6 from BM - Italy / ENEC approved. Service temperature up to 200°C. Cross section 4mm <sup>2</sup> Rating 4A/400V. Wiring provided with earth connection.	HIGH PRESSURE SODIUM Ordering Code: <b>2361-X-3-625-XX</b> HST-MF E40 400W (56500 lm)
PAINTING:	First Stage: Chromatization treatment, resistant to corrosive and extreme environment. Second Stage: Coated with UV stabilized polyester powder in automatic chamber. Third Stage: Baked in digital temperature control room at 200°C for 30 minutes.	

**AVAILABLE COLOR:**

Black	- RAL9005 (replace last 2 digits on ordering code with 01)
Graphite	- RAL7016 (replace last 2 digits on ordering code with 02)
Dark Grey	- RAL7037 (replace last 2 digits on ordering code with 03)
Aluminium Silver	- RAL9006 (replace last 2 digits on ordering code with 04)
White	- RAL9010 (replace last 2 digits on ordering code with 06)

# OD-8001 / OD-8003

LINEAR FLUORESCENT  
SURFACE WASHER



## SPECIFICATION

- CONSTRUCTION:** Fixture is manufactured in compliance with IEC 60598-1. Electrical protection class 1. IP65.
- BODY:** Corrosion resistant extrusion aluminium S6063 alloy - copper<0.1% Covers and bracket in corrosion resistant high-pressure die-cast aluminium ADC12 alloy.
- OPTIC COVER:** Impact resistant transparent safety tempered glass. Able to stand sudden change in temperature of up to 250°C.
- REFLECTOR:** High purity anodised aluminium 99.90% Available in symmetrical and asymmetrical light distribution.
- PROTECTION:** Weather proof and durable silicone gasket. Service temperature -40°to +200°C.
- FASTENING:** All external screw is in 316 stainless steel with silicone grease dipping.
- CABLE ENTRY:** IP68 PG9 brass nickle cable gland for H07RN-F cable 3G x1.0 from BM - Italy / IMQ approved.
- LAMP HOLDER:** G5/G13 lampholder in PBT GF thermoplastic with high-grade material contacts from Vossloh Schwabe - Germany / ENEC approved. T130 rating 2/500.
- CONTROL GEAR:** High frequency electronic ballast from Tridonic / ENEC approved. 220-240V 0-50-60Hz tc 70. For T5 fluorescent lamp.  
Magnetic ballast from Vossloh Schwabe - Germany / ENEC approved. 230V 50Hz tw130. EEI = B2 class for T8 fluorescent lamps.
- WIRING:** 1x0.75 silicone rubber insulated cable from CET Eletric - Italy / IMQ approved. 2kV / -60°to +180°C service temperature. Connector in PA6.6 nickle-plated brass insert. 600V/24A. -40°to +130°C service temperature. Cross section 2.5mm<sup>2</sup> VDE approved. Wiring provided with earth connection.
- PAINTING:** First Stage: Chromatization treatment, resistant to corrosive and extreme environment.  
Second Stage: Coated with UV stabilized polyester powder in automatic chamber.  
Third Stage: Baked in digital temperature control room at 200°C for 30 minutes.

## AVAILABLE COLOR:

- Black - RAL9005 (replace last 2 digits on ordering code with 01)
- Graphite - RAL7016 (replace last 2 digits on ordering code with 02)
- Dark Grey - RAL7037 (replace last 2 digits on ordering code with 03)
- Aluminium Silver - RAL9006 (replace last 2 digits on ordering code with 04)
- White - RAL9010 (replace last 2 digits on ordering code with 06)

## AVAILABLE LIGHT DISTRIBUTION:

- Symmetrical light distribution: Product code **OD-8001**  
Asymmetrical light distribution: Product code **OD-8003**



	A	B	C
<b>T5 14W</b>	620	65	85
<b>T5 21W</b>	925	65	85
<b>T5 28W</b>	1220	65	85
<b>T5 35W</b>	1520	65	85
<b>T8 18W</b>	655	65	85
<b>T8 36W</b>	1265	65	85

LINEAR FLUORESCENT

Ordering Code:  
**8001-0-3-311-XX**  
**8003-0-3-311-XX**  
T5 G5  
14W (1200 lm)

LINEAR FLUORESCENT

Ordering Code:  
**8001-0-3-312-XX**  
**8003-0-3-312-XX**  
T5 G5  
21W (1900 lm)

LINEAR FLUORESCENT

Ordering Code:  
**8001-0-3-313-XX**  
**8003-0-3-313-XX**  
T5 G5  
28W (2600 lm)

LINEAR FLUORESCENT

Ordering Code:  
**8001-0-3-314-XX**  
**8003-0-3-314-XX**  
T5 G5  
35W (3300 lm)

LINEAR FLUORESCENT

Ordering Code:  
**8001-0-3-321-XX**  
**8003-0-3-321-XX**  
T8 G13  
18W (1350 lm)

LINEAR FLUORESCENT

Ordering Code:  
**8001-0-3-322-XX**  
**8003-0-3-322-XX**  
T8 G13  
36W (3350 lm)

